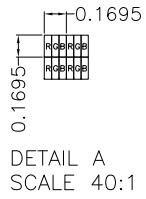


TFT PIN DESCRIPTION	
PIN	SYMBOL
1	NC
2	VDD
3	VDD
4	NC
5	NC
6	NC
7	NC
8	RXIN0-
9	RXIN0+
10	GND
11	RXIN1-
12	RXIN1+
13	GND
14	RXIN2-
15	RXIN2+
16	GND
17	RXCLKIN-
18	RXCLKIN+
19	GND
20	RXIN3-
21	RXIN3+
22	GND
23	NC
24	NC
25	GND
26	NC
27	NC
28	GND
29	NC
30	NC
31	GND
32	GND
33	GND
34	NC
35	PWM
36	LED_EN
37	NC
38	VLED
39	VLED
40	VLED

CTP PIN DESCRIPTION	
PIN	SYMBOL
1	GND
2	NC
3	D+
4	D-
5	VBUS



NOTES FOR TFT:

1. DISPLAY TYPE: TFT, TRANSMISSIVE, NORMALLY BLACK
2. OPERATING VOLTAGE: VDD/LED_EN=3.3V, VLED=10V~15V
3. VIEWING DIRECTION: FULL VIEWING ANGLE
4. IC DRIVER: HX8245 + HX8695
5. BACKLIGHT: 36-CHIP WHITE LED, If=240mA, Vf=16.2V~20.4V
6. TOP POLARIZER SURFACE TREATMENT: ANTI-GLARE

NOTES FOR OTHERS:

1. OPERATING TEMP.: -20°C ~ 70°C
2. STORAGE TEMP.: -30°C ~ 80°C
3. SURFACE LUMINANCE: 510CD/M²(TYP.) WITH CTP
4. GENERAL TOLERANCE: ±0.3MM
5. ROHS COMPLIANT

NOTES FOR CTP:

1. 10.1 INCH PROJECTIVE CAPACITIVE TOUCH PANEL
2. OPERATING VOLTAGE: VCC=5.0V
3. COVER GLASS + SENSOR GLASS +FPCA
4. IC DRIVER: ILI2511(TX:29*RX:19)
5. INTERFACE: USB
6. RESOLUTION: 1280 * 800
7. MULTI FINGER: UP TO 5
8. HARDNESS OF COVER SURFACE: 6H

PRINT BLACK C ON THE REAR OF COVER

COMPONENTS AREA

PI STIFFENER CONTACT SIDE

FRONT

BACK

PI STIFFENER

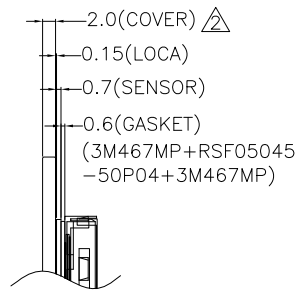
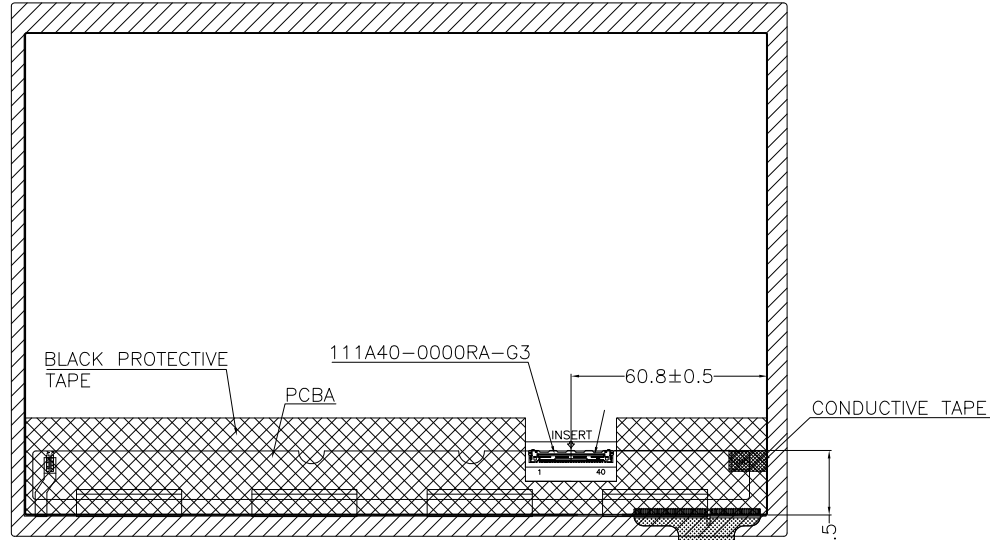
CONTACT SIDE



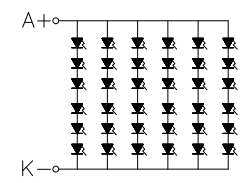
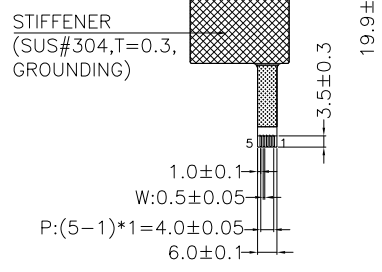
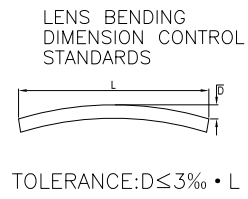
MULTI-INNO TECHNOLOGY CO., LTD.

VER.	REVISED DESCRIPTION	REVISOR	DATE
02	CORRECT THE THICKNESS OF COVER	RITA	2019.10.08
01	FIRST ISSUE	CAROL	2019.09.12

DRAWN BY:	CAROL	2019.09.12	SCALE : 1/1	MODULE P/N:	MI1010AAT-6CP1
CHECKED BY:			UNIT: mm	DESCRIPTION:	TFT + CTP MODULE
APPROVED BY:			SHEET NO.: 1/2		
VERSION NO:	02				




DETAIL B
SCALE 2:1



BACKLIGHT CIRCUIT DIAGRAM

 MULTI-INNO TECHNOLOGY CO., LTD.

02	CORRECT THE THICKNESS OF COVER	RITA	2019.10.08	CHECKED BY:	CAROL	2019.09.12		MODULE P/N:	MI1010AAT-6CP1
01	FIRST ISSUE	CAROL	2019.09.12	APPROVED BY:			SCALE : 1/1	DESCRIPTION:	TFT + CTP MODULE
VER.	REVISED DESCRIPTION	REVISOR	DATE	VERSION NO:	02		UNIT: mm		
							SHEET NO.: 2/2		